

PART OF THE SW.1/4, SEC. 23, T.5N., R.1W., S.L.B. & M.

EASTWOOD SUBDIVISION NO. 7

LOTS 105-114 & 120-131

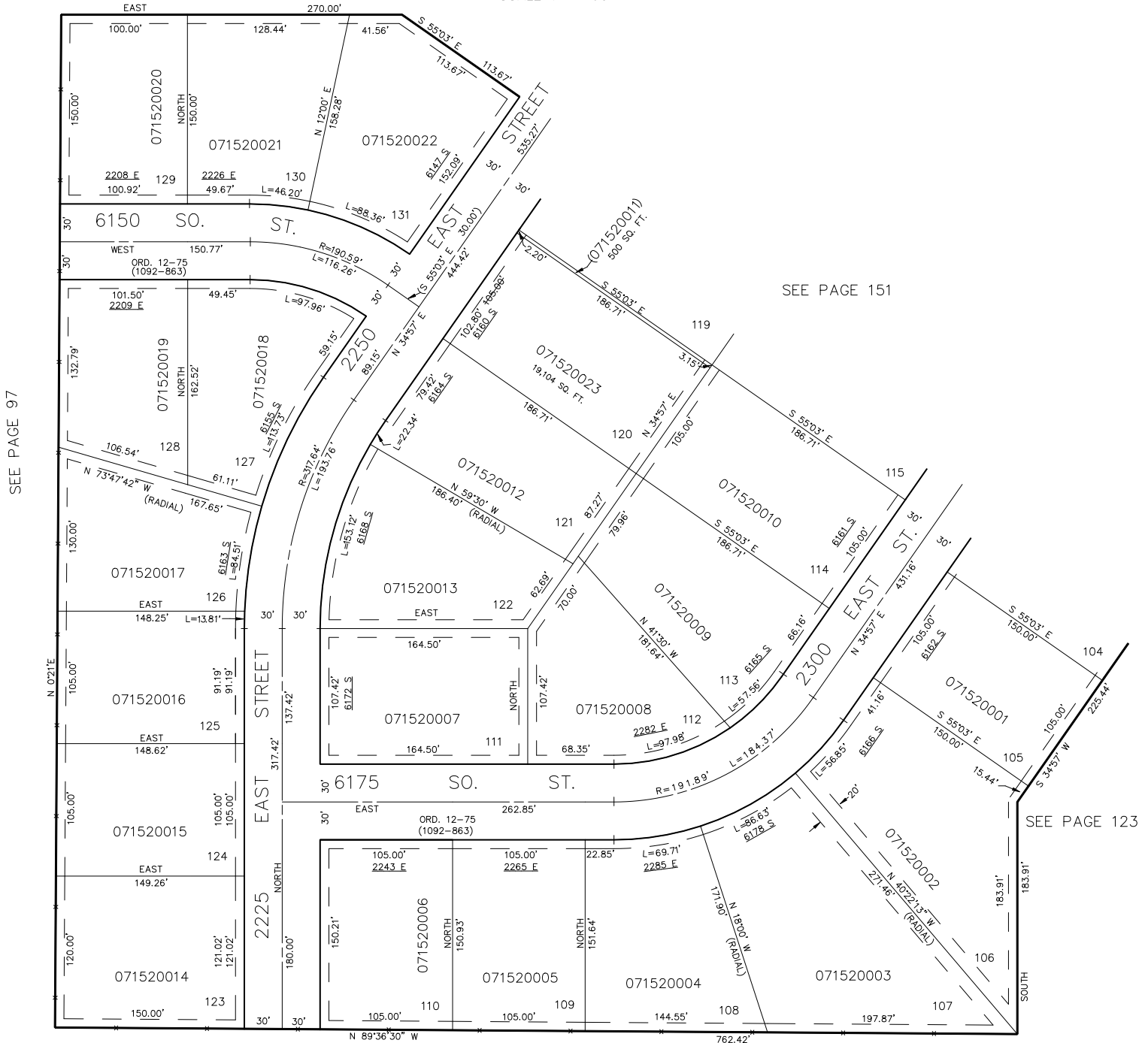
IN WEBER COUNTY

SCALE 1" = 60'

TAXING UNIT: 159

SEE PAGE 97

152



7' UTILITY & DRAINAGE EASEMENTS EACH
SIDE OF PROPERTY LINES AS INDICATED
BY DASHED LINES EXCEPT AS OTHERWISE
SHOWN.

SEE PAGE 97

FOR COMPLETE ENG DATA SEE
ORIGINAL DEDICATION PLAT IN
BOOK 17, PAGE 42 OF RECORDS.